

1 2 3 4

Measures 1-4 of a musical score. The top staff is in treble clef and the bottom staff is in bass clef. The key signature has one flat (B-flat). Measure 1 starts with a treble clef chord and a bass clef chord. Measures 2-4 continue with complex rhythmic patterns in both staves, including triplets and sixteenth notes.

1:0ch 1

5 6 7 8

Measures 5-8. Measure 5 features a treble clef chord with a sharp sign. Measures 6-8 show rhythmic patterns in both staves, with measure 7 containing a triplet in the treble staff.

9 10 11

Measures 9-11. Measure 9 has a treble clef chord. Measure 10 features a triplet in the treble staff. Measure 11 shows a treble clef chord and a bass clef chord.

12 13 14 15

Measures 12-15. Measure 12 has a treble clef chord. Measure 13 has a treble clef chord. Measure 14 has a treble clef chord. Measure 15 has a treble clef chord.

16 17 18 19

Measures 16-19. Measure 16 has a treble clef chord. Measure 17 has a treble clef chord. Measure 18 has a treble clef chord. Measure 19 has a treble clef chord.

20 21 22 23

Measures 20-23. Measure 20 has a treble clef chord. Measure 21 has a treble clef chord. Measure 22 has a treble clef chord. Measure 23 has a treble clef chord.

24 25 26 27

Measures 24-27. Measure 24 has a treble clef chord. Measure 25 has a treble clef chord. Measure 26 has a treble clef chord. Measure 27 has a treble clef chord.

APLICACIONES EN INFORMÁTICA, NANOTECNOLOGÍA Y BIOTECNOLOGÍA

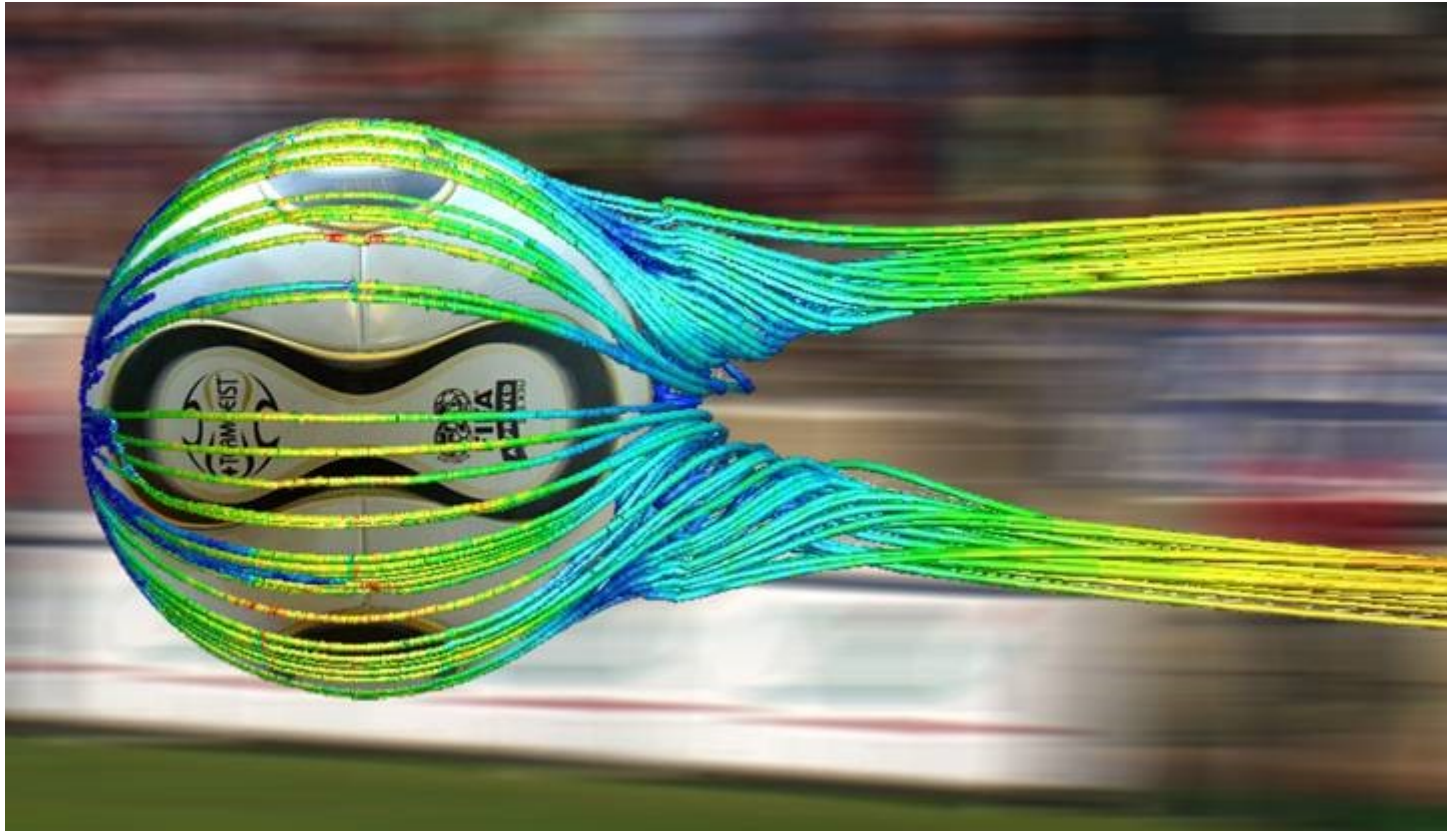
JAVIER ENCISO
TECHNISCHE UNIVERSITÄT MÜNCHEN
INSTITUTO POLITÉCNICO AGROINDUSTRIAL
4 de Agosto de 2009

AGENDA

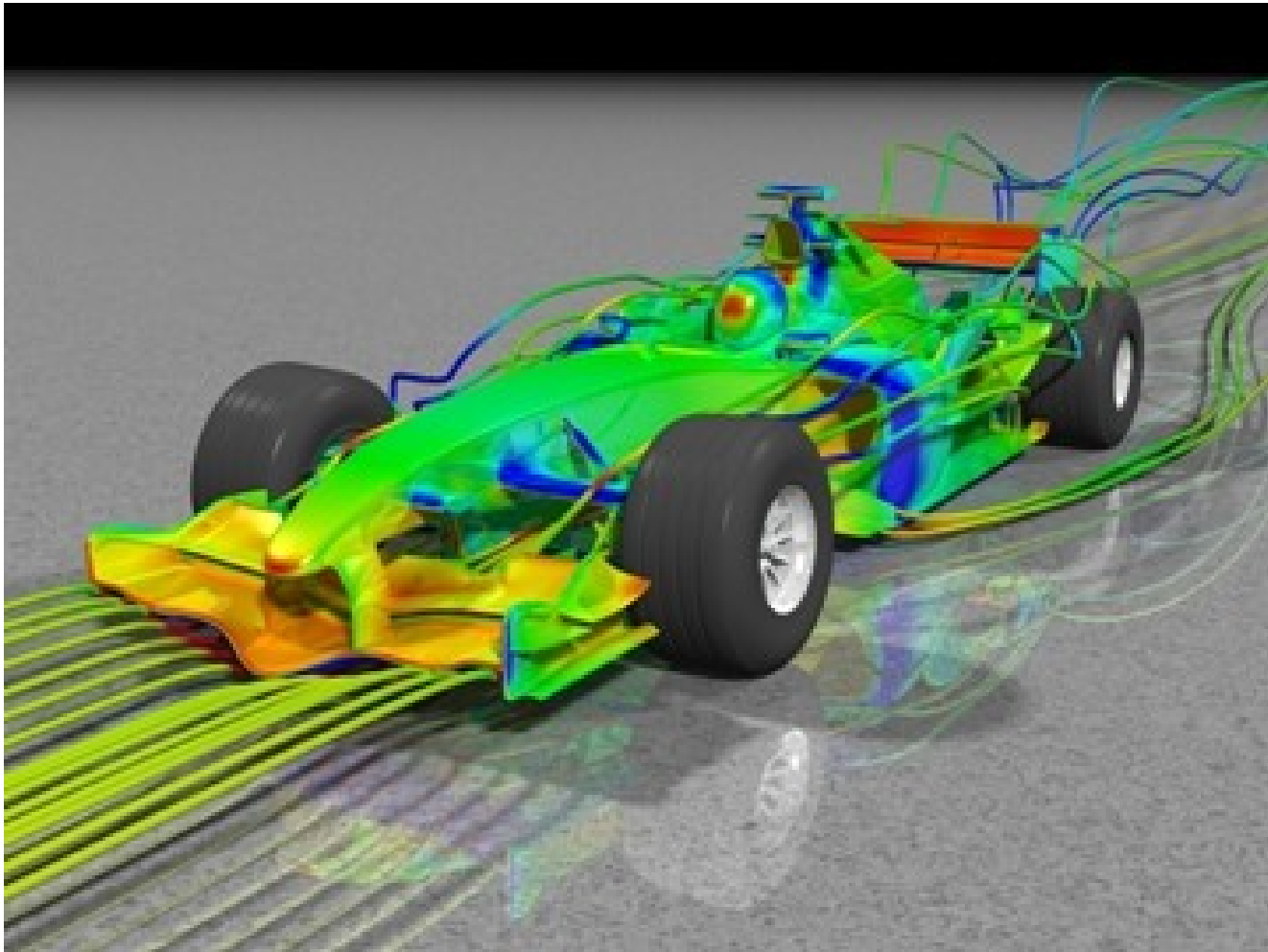
- Informática
- Nanotecnología
- Biotecnología
- Estudios en el exterior
- Referencias

INFORMÁTICA

DINÁMICA DE FLUIDOS COMPUTACIONAL



DINÁMICA DE FLUIDOS COMPUTACIONAL



ASTROFÍSICA COMPUTACIONAL

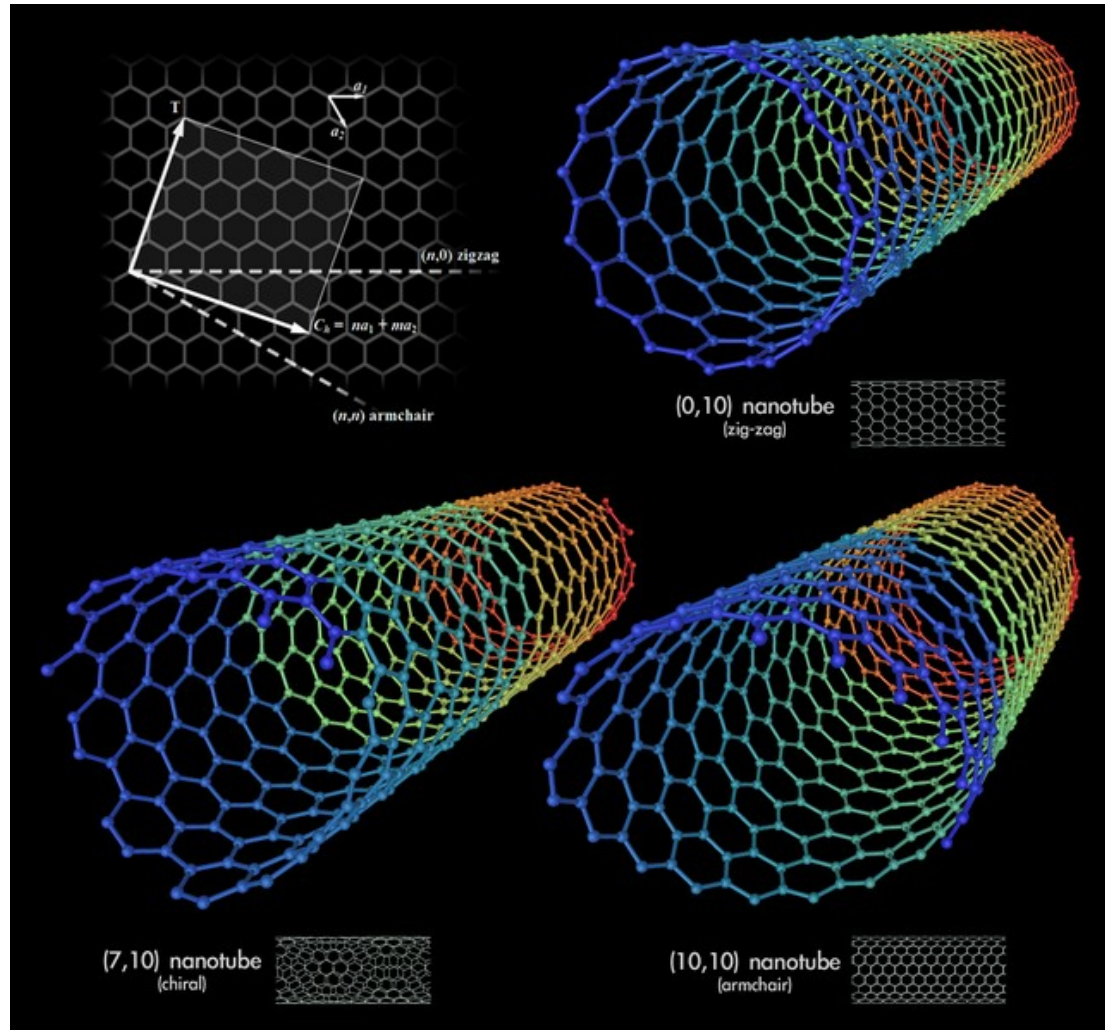


WEB 2.0

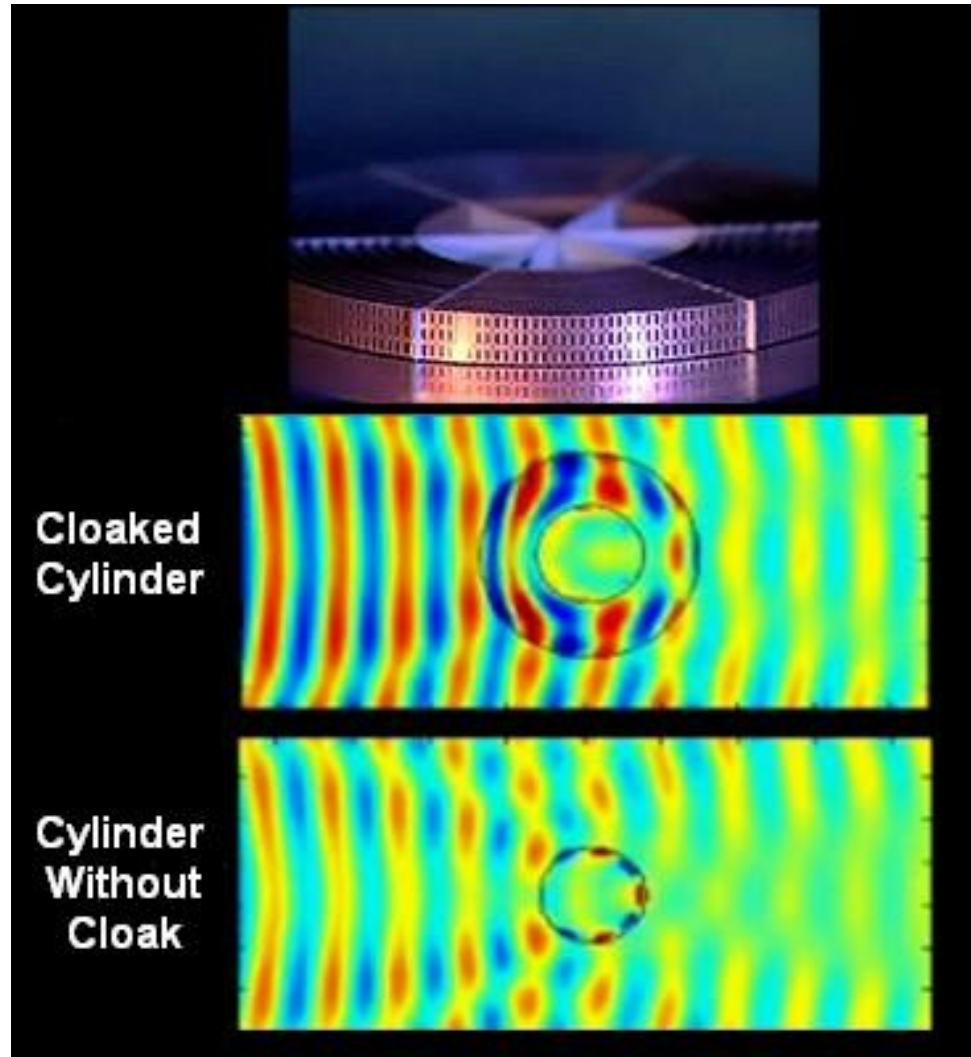


NANOTECNOLOGÍA

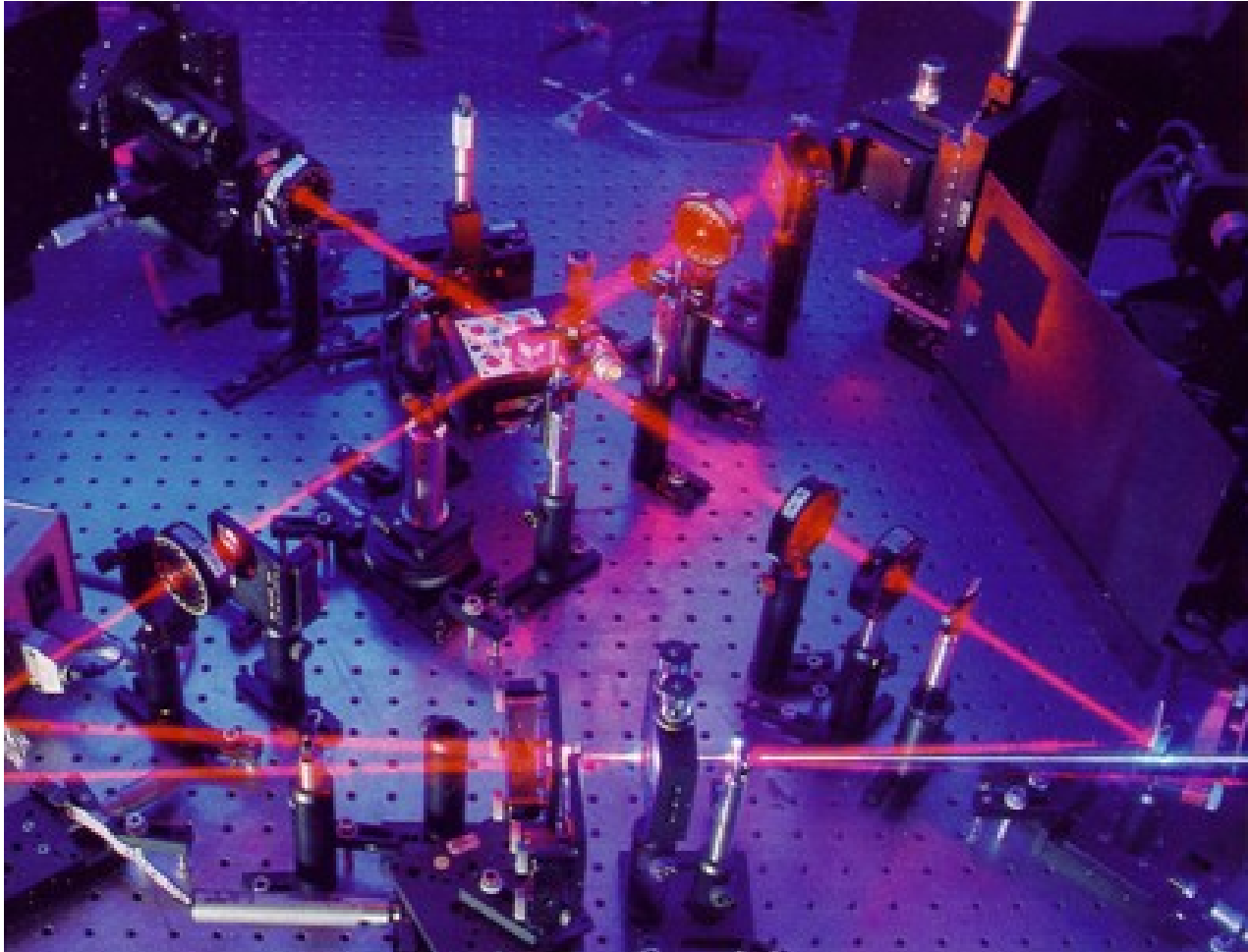
NANOTUBOS DE CARBON



INVISIBILIDAD

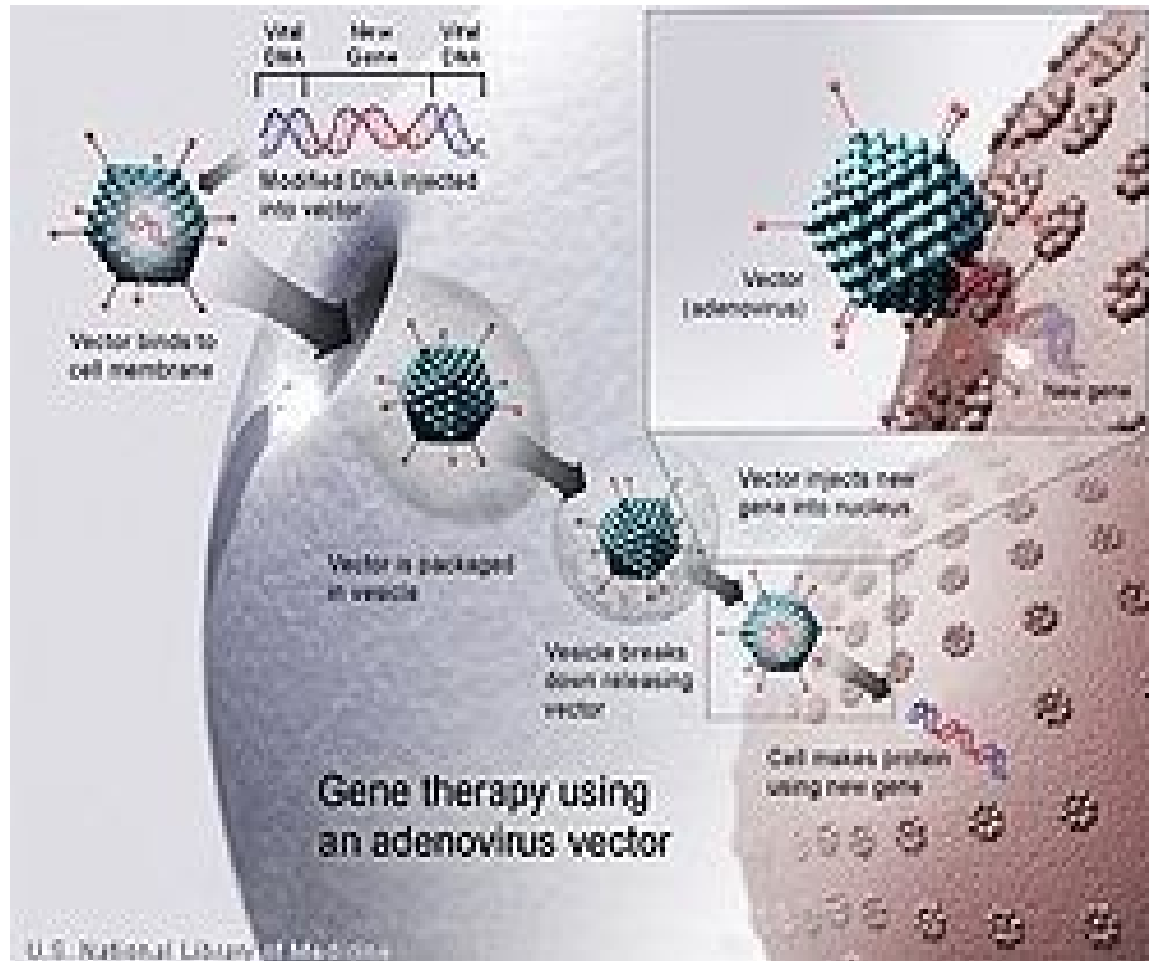


TELEPORTACIÓN

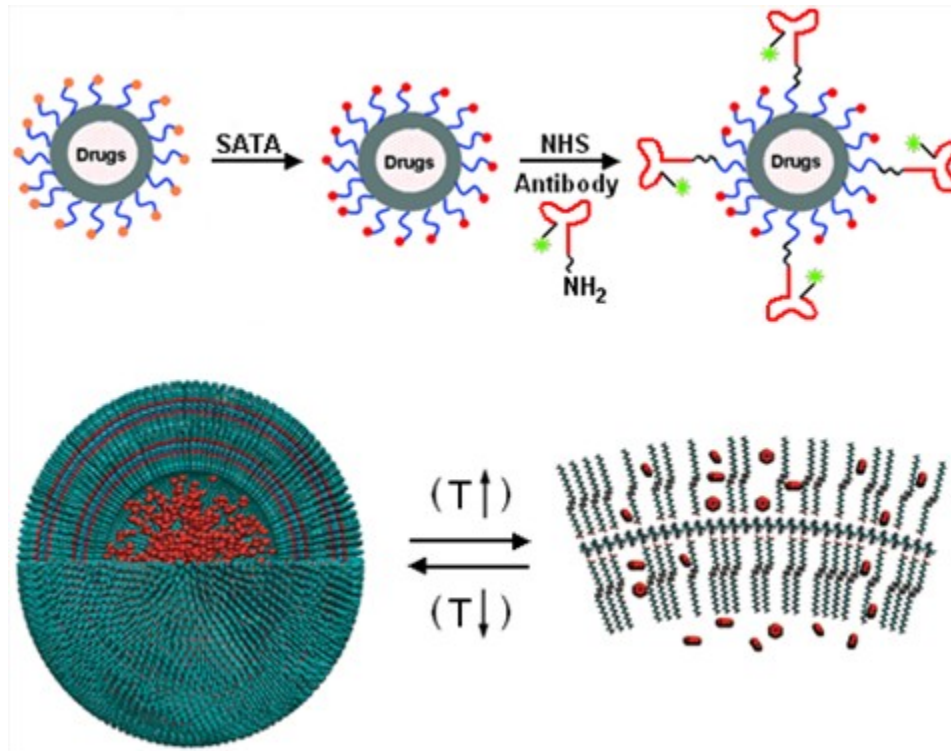


BIOTECNOLOGÍA

TERAPIA GENÉTICA



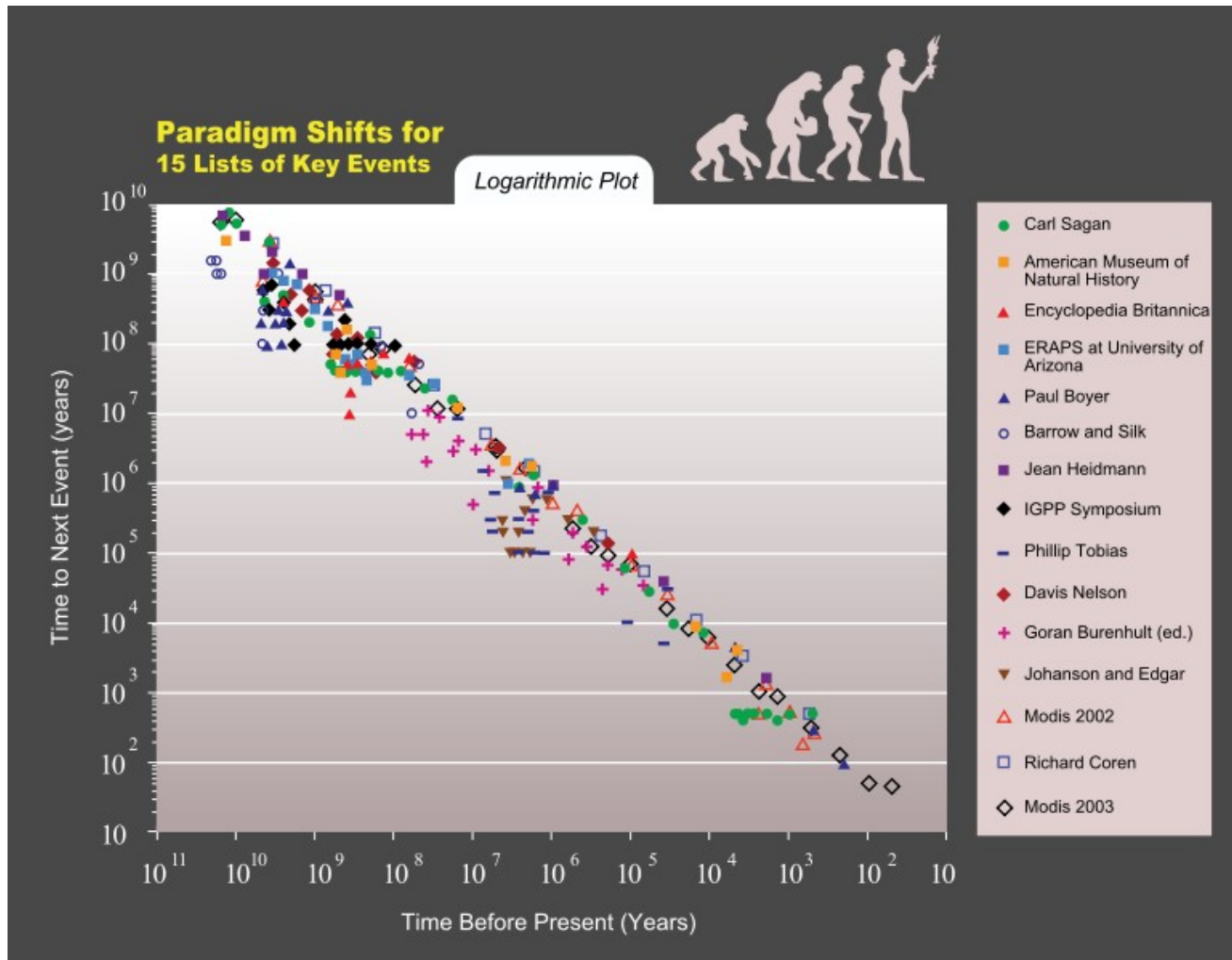
SUMINISTRO PROGRAMADO DE MEDICAMENTOS



SIMULACIÓN CEREBRAL



SINGULARIDAD TECNOLÓGICA



ESTUDIOS EN EL EXTERIOR

ESTUDIOS EN EL EXTERIOR

- Dominar el idioma **INGLÉS**: presentar TOEFL, IELTS, entre otros
- Seleccionar un programa académico:
 - Academic Ranking of Universities
<http://www.arwu.org/>
 - Servicio Alemán de Intercambio Académico (DAAD) <http://www.daad.de/es/index.html>
 - ICETEX <http://www.icetex.gov.co/>
 - COLFUTURO <http://www.colfuturo.org/>

REQUISITOS PARA ADMISIÓN

- Diplomas, Actas de Grado, Certificados de Notas **APOSTILLADOS**.
 - Se recomienda tener un promedio acumulado de carrera equivalente al 75%
- Solicitar (dos o tres) cartas de recomendación a profesores.
- Escribir una carta de propósito.

¿Preguntas?

REFERENCIAS

- Nanotubos de carbón
http://en.wikipedia.org/wiki/Carbon_nanotube
- Suministro programado de medicamentos
<http://www.polymer.fudan.edu.cn/research/Penghs/>
- Singularidad tecnológica
http://en.wikipedia.org/wiki/Technological_singularity
- Simulación cerebral
<http://www.gizmowatch.com/entry/blue-brain-stead>

REFERENCIAS

- Diseño de meicamentos
<http://en.wikipedia.org/wiki/Biotechnology>
- Teleportación
<http://www.zamandayolculuk.com/cetinbal/QUAN>
- Invisibilidad
<http://www.fahad.com/2006/10/first-demonstrat>

REFERENCIAS

- Web 2.0

http://en.wikipedia.org/wiki/Web_2.0

- Dinámica de fluidos computacional

http://en.wikipedia.org/wiki/Computational_fluid

- Astrofísica computacional

<http://www.scholarpedia.org/article/Computation>